

Newdeal FILTER

Filter with different impurity filtration degrees.

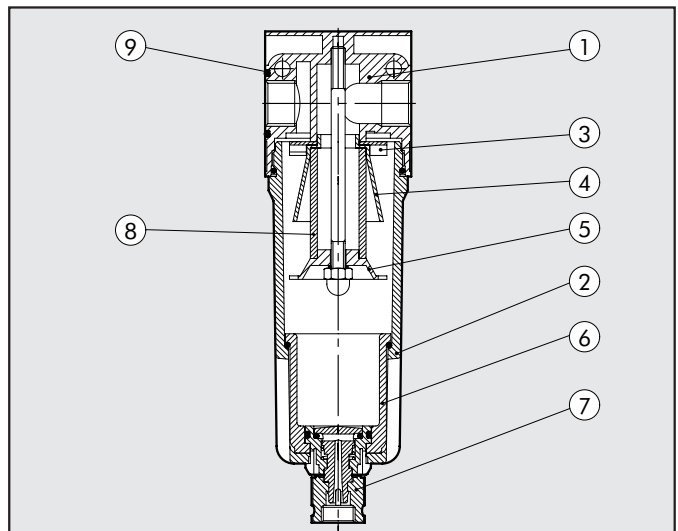
- Metal bowl with external viewing
- Semi-automatic and condensate drainage

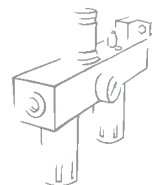


TECHNICAL DATA	FIL. ND 1/4"	FIL. ND 3/8"	FIL. ND 1/2"	FIL. ND 3/4"	FIL. ND 1"
Threaded port	1/4"	3/8"	1/2"	3/4"	1"
Degree of filtration	4µm 20µm 50µm			4µm; 20µm; 50µm	
Max. inlet pressure	MPa	1.8		1.8	
	bar	18		18	
	psi	261		261	
Flow rate at 6.3 bar (0.63 MPa-91 psi)	NI/min	1300	3100	9100	
ΔP 0.5 bar (0.05 MPa – 7 psi)	scfm	46	110	324	
Flow rate at 6.3 bar (0.63 MPa-91 psi)	NI/min	1720	4100	11000	
ΔP 1 bar (0.1 MPa – 14 psi)	scfm	61	146	391	
Fluid	Compressed air				
Max temperature at 1 MPa; 10 bar; 145 psi	°C	50°			
	°F	122°			
Weight	Kg	0.4	0.9	1.2	
Wall fixing screws		M4x40	M4x55	M6x75	
Mounting position		Vertical			
Drain		Manual - Semi-auto Automatic (SAC o RA)		Manual - Semi-auto Automatic (RA)	
Bowl capacity	cm ³	10	45	170	
Note on use	The maximum inlet pressure for the version with RA automatic condensate drainage must not exceed 10 bar.				

COMPONENTS

- ① Zamak body
- ② Aluminium bowl
- ③ Technopolymer centrifuge
- ④ Technopolymer baffle plug
- ⑤ Technopolymer screen
- ⑥ Clear technopolymer bowl
- ⑦ Drain (RMSA)
- ⑧ Sintered bronze filter cartridge
- ⑨ NBR gaskets



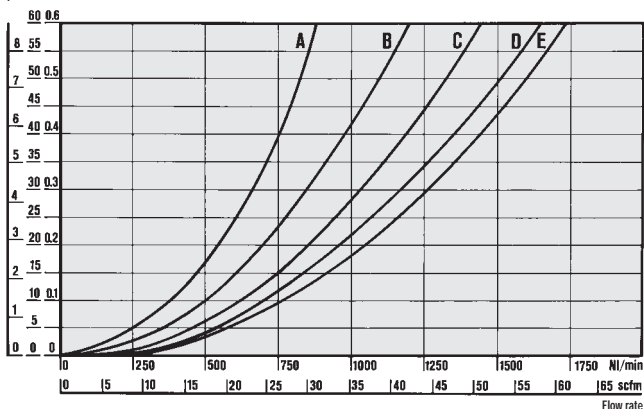


FLOW CHARTS

FIL 1/4

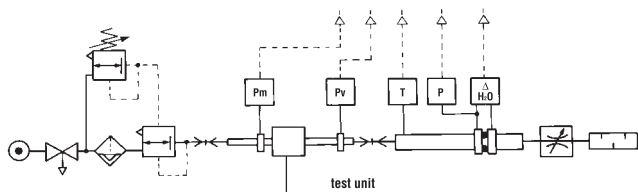
$\Delta P = (P_m - P_v)$

psi KPa bar



Department of Mechanics

Turin Polytechnic



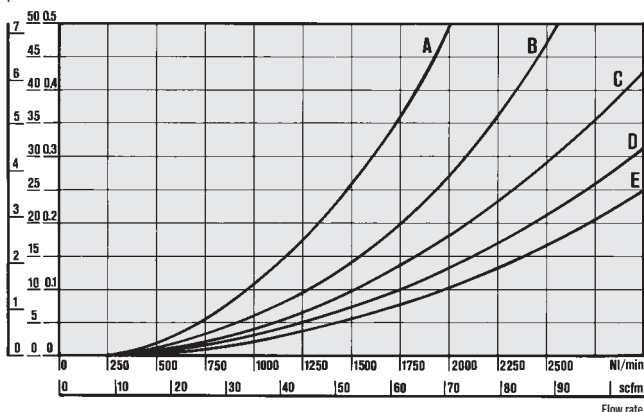
• Flow tests carried out at the Department of Mechanics, Turin Polytechnic, using the computerized test bench following CETOP RP50R recommendations (ISO DIS 6358-2-approved) with ISO 5167 diaphragm gauge.

- (A) = 2 bar - 0,2 MPa - 29 psi
- (B) = 4 bar - 0,4 MPa - 58 psi
- (C) = 6 bar - 0,6 MPa - 87 psi
- (D) = 8 bar - 0,8 MPa - 116 psi
- (E) = 10 bar - 1 MPa - 145 psi

FIL 3/8 - 1/2

$\Delta P = (P_m - P_v)$

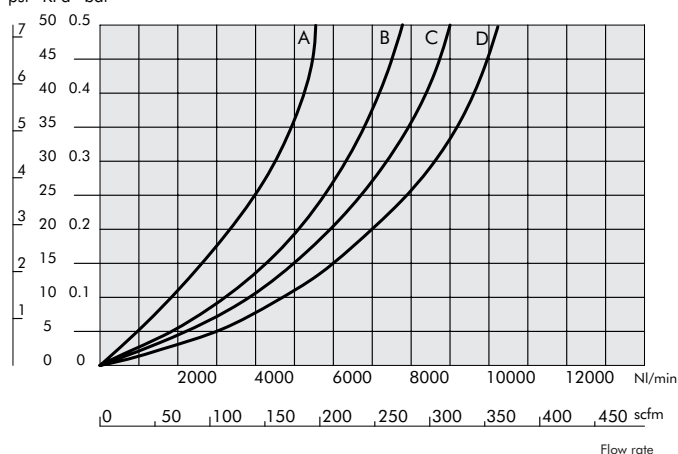
psi KPa bar



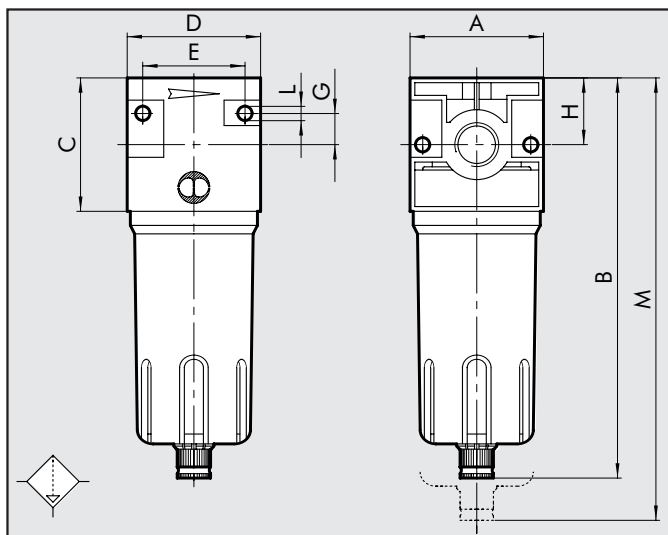
FIL 3/4 - 1"

$\Delta P = (P_m - P_v)$

psi KPa bar



DIMENSIONS



	G 1/4	G 3/8	G 1/2	G 3/4	G 1"
A	42	60	80		
B	142	180	235		
C	42	60	80		
D	42	60	80		
E	32	46	66		
G	10	14	22		
H	21	30	40		
L	M4 hole	M4 hole	M6 hole		
M	185	230	325		

